

Platte Land Trust Annual Report 2022

Mission: Protecting land, natural resources, and open space in the four-corners area of Missouri, Kansas, Nebraska, and Iowa for the benefit of today's communities and future generations.

Summary

- Protect 662 acres of habitat, family farm, and recreation lands.
- Added 12 acres of wildlife habitat in Shawnee, Kansas with a conservation easement donation.
- Completed a MARC Water Quality education grant with 200+ people contacts, two environmental education signs and improved habitat at CSNA.
- Started two conservation easement projects slated for completion in 2023.
- Completed the Land Trust Accreditation process.
- Fifty-three bird species identified using CSNA from a bird survey.
- Two Eagle Award projects were completed at CSNA.
- One Girl Scout *Take Action* project completed.
- 465 Volunteer hours contributed for land stewardship activities and projects.
- Three in-person events were held plus the annual native plant sale.

Protecting Land Through Conservation Easements

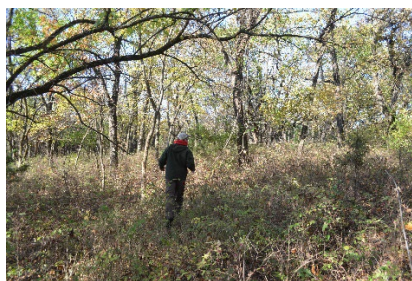
New Conservation Easement – Shawnee Farm

Platte Land Trust accepted a conservation easement donation on 12-acres of wildlife habitat in Shawnee, Kansas. We started on this project in late 2020 and completed the work the Fall 2022. The conservation easement permanently protects savanna, woodland, glade, pond, and wetland habitats in the Little Mill Creek watershed.

This protected land compliments natural areas of adjacent parcels, providing wildlife space to live and roam. The savanna includes oak, elm, ash, walnut, hickory, Osage orange, and other deciduous species. The pond is currently a cattail wetland due to a breach in the dam. The landowner is repairing the dam so the pond holds water again.

The property provides a riparian buffer for the stream and the pond-wetland captures stormwater runoff from uphill commercial properties, filtering pollutants and improving water quality in Little Mill Creek. Protected green space also helps mitigate the impacts of climate change such as heat island effects.

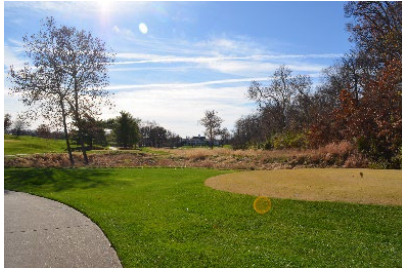
The property is not open to the public.



Stewardship of Easements

Platte Land Trust continued to monitor approximately 630 acres in conservation easement holdings.

- The National Golf Course (Parkville, MO) – about 300 acres in two golf courses
- The Frank Adams MO Century Farm (Jackson County, MO) - 297 acres Missouri Century farm
- Sunflower Land Trust Mitigation Bank #1 (Derby, Kansas) - 30-acres of wetlands and creek restoration



The National Golf Club



Adams Missouri Century Farm



Wetland Mitigation Bank

Restoring Habitat at Charlotte Sawyers Nature Area

PLT completed a sixth year of a ten-year land stewardship plan to remove invasive plant species and restore the grasslands and woods. This work continues with assistance from the dedication of PLT Board Directors and volunteers such as Missouri Master Naturalists.

- Woodland thinning and cedar removal was conducted in January and February.
- Spot spraying of invasive plants throughout the warm seasons in the grassland areas.
- Clearing trails of fallen trees. Several trees were blown down or severely damaged in the June storm, including two large oak trees in the woodland below the dam.
- Additional reseeding where the dam was repaired in 2020 with native grasses and flowers.
- Cleared invasive plants and brush along the west property boundary and the savanna.
- Burned brush piles, especially cedar branches of fallen trees and vines, to allow sunlight to reach native plants.
- Implemented tasks under a MARC Water Quality Education grant including planting native seedlings near the parking area and around the pond; designing water quality education signs for installation at CSNA.
- Establishment of native plants continues in areas seeded.
- Fifty-three bird species identified using the property from bird survey conducted by MO Master Naturalists. Owl pellets were found during a couple of volunteer workdays.

Photo Gallery



People, Programs and Projects

Earth Day + Arbor Day Celebration

PLT passed out free native tree seedlings to celebrate spring at the Parkville Farmer's Market on May 7. The tree seedlings were purchased from the Missouri Department of Conservation nursery. About 75 seedlings were given to approximately 50 patrons.



Volunteer Contributions

Volunteer community service activities continued at Charlotte Sawyers Nature Area in 2022.

- Missouri Master Naturalist (MMN) continued conducting a bird survey.
- MMN volunteers assisted with invasive plant removal on volunteer workdays.
- Boy Scouts removed invasive shrubs along Union Chapel Road.
- Family groups also helped remove invasive plant species.



Scout Award Projects

Scouts completed service award projects at CSNA throughout the year. Each project is of the Scout's or troop's choosing from a list of land stewardship and property improvements developed by the Land Stewardship committee.

Two BSA Eagle Award projects were completed in 2022:

- Back woodland trail – Hunter Mutti, Boy Scout Troop 393
- Wildlife viewing station, savanna – Cooper Girard, Boy Scout Troop 393

Girl Scout Troop 2211 conducted a *Take Action* project in October; staining the wildlife viewing benches, planting a rain garden, and clearing the hiking trails of tree debris.





Groups at Charlotte Sawyers Nature Area

Charlotte Sawyers Nature Area (CSNA) is used for Scout troop camping once per month with advance registration. In 2022, camping occurred three times in the spring.

Northland Homeschoolers held a nature education program at CSNA in the fall.

One forest bathing event was held for a private group.

Native Plant Sale

The annual native plant sale was held in September at Backyard Bird Center on Barry Road. This fundraiser event for PLT supports operations and land stewardship. Many thanks to Mark McKellar and the staff of Backyard Bird Center and to Missouri Wildflower Nursery.

Annual Friends and Supporters Event

The Platte Land Trust's annual membership event was held October 15 at Weatherby Lake's C-Point Pavilion. Board members and friends enjoyed a fall morning by the lake with pancakes by Chris Cakes and coffee. A brief report of PLT's activities and achievements in 2022 was given by the Board President.



Family Time Outdoors

This program resumed with one program in early summer.

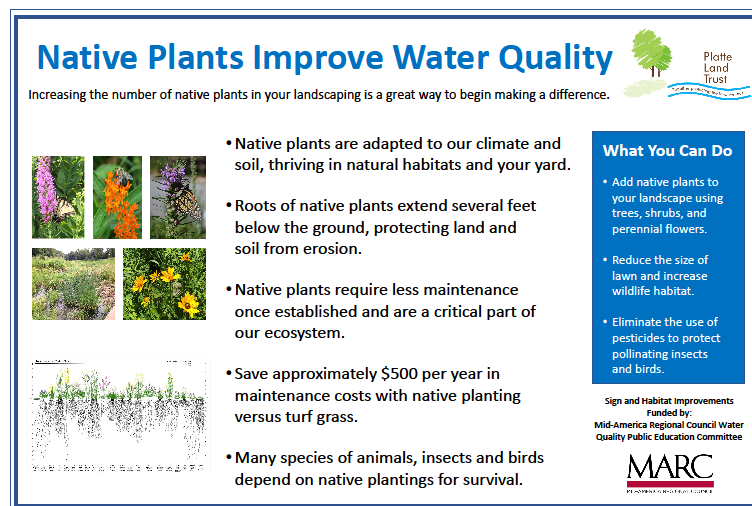
Partnerships

PLT actively participated in the Missouri Land Trust Coalition (MLTC), served on the steering committee, and assisted with the new website, www.missourilandtrusts.org. We also helped organize and facilitate the annual meeting of MLTC, held in Hartsburg, Missouri in June.

MARC Water Quality Grant

Platte Land Trust received a grant from Mid-America Regional Council (MARC) Water Quality education to inform the public of the benefits native plants provide to prevent pollution and improve water quality. As part of the grant, the following milestones were achieved.

- Distributed 200 brochures on the benefits of native plants.
- Designed two education signs on native plants for CSNA. Signs were installed in 2023.
- Conducted one Family Time Outdoors event with 15 people.
- Planted 1200 native plants at CSNA during a fall event; a new rain garden and vegetation around the pond.
- Reseeded the utility corridor with native seeds.



Strategic Plan 2025 Progress

The Board of Directors continued implementation of our strategic plan to grow and improve the organization for a sustainable future.

Grow in Land Holdings

- Completed one conservation easement in December, Shawnee Farm, protecting 12 acres of wildlife habitat and stream corridor.
- Started land protection projects with two property owners to protect 165 acres.
- Increased public use of Charlotte Sawyers Nature Area. It remains open to the public every day to allow more people to enjoy nature.
- Collected input on the CSNA master plan at the annual friend's event.
- Established a land acquisition fund to provide financial support to conservation projects.

Grow in Organization & People Strength

- Completed the Land Trust Accreditation process. PLT will be notified in early 2023 of its success.
- Added three Board Directors for a total of eleven members. Two Board Directors stepped down from the Board.
- 465 Volunteer hours contributed to habitat improvements at CSNA and PLT events.
- Earth Day Celebration distributed native shrub seedlings and water quality brochures to 100 people.
- Summer Solstice brought 35 people to CSNA. Activities included a nature hike, campfire, and a program on using your five senses in nature.

Grow in Financial Stability

- Native plant sale: Customers from throughout the Kansas City region attended the sale, made purchases, and received planting advice from board members.
- MARC Water Quality Education grant used to inform 200+ people on the benefits of native plants and improve habitat at CSNA.
- Continued to diversify and increase revenue sources.
- Fully funded land stewardship and conservation defense reserves.
- Operation reserve fund maintained for emergencies.

Financial Statement

At the close of the fiscal year on December 31, 2022, financial assets were at the following levels. A summary of revenue and expenses for the fiscal year is listed below.

Unrestricted	\$ 28,938
Donor Restricted	\$ 27,892
Board Designated Reserves	\$115,000
Real Estate	\$160,000

Board Designated Reserves:

Land Stewardship	\$ 50,000
Conservation Defense	\$ 45,000
Operations	\$ 20,000

Revenue and Expenses Summary

Revenue

Donations	\$4,357
Conservation Easement contributions	\$22,652
Grants	\$600
Fundraising – plant sale	\$12,440
Land Transaction contributions - restricted	\$15,836
Interest Income	\$1,067
Total revenue	\$56,952

Expenses

Administration & Financial Management	\$4,141
Capacity Building & Communications	\$1,323
Accreditation	\$10,652
Programs & Outreach	\$2,891
Fundraising	\$10,271
Land Stewardship	\$6,082
Land Acquisition	\$3,942
Legal fees	\$ -
Reserves – Board designated	
Total Expenses	\$39,302

Net	\$17,650
------------	-----------------

In December 2022, the Board of Directors voted to establish a land acquisition fund with a portion of balance in the operating account, using the unexpended funds the year.

Friends and Supporters

Platte Land Trust is very grateful for the gifts of time, talent, and treasure received in 2022.

Volunteers

In addition to the Board of Directors who run the organization, Platte Land Trust thanks our many volunteers for land stewardship, property improvements, and events.

- CSNA Habitat Volunteers: Sharen Hunt, Tom Jacobs, Nancy McDowell, Chris Cardwell, Carla Dods, Jeanette Hartshorn, John Burwell, Charlie Higdon, Jim Braddock, Chris Hershey, Shannon & Paul Holder, David Dods, Galen Dods, Ruth & Walt Hilbarger, Simon Dickmann, Manuel Mutscher, Lynn Horsely, David Hermanns, Taylor Neff, Elaine Leander, Victor Poland, Bruce Duffin, Zibah Wymer, Angela Villanueva, Rosa Villanueva, Happy Sattva, Mias Wymer, Judith Boone, Alexander Davis, Cassandra Walcott, Bill Drummond, Linda Burwell, Sydney Steele, Emma McAdams, Mark Kover, Joyce Braddock, Karen Townsend, Chloe Thomas, Zach Adams.
- Boy Scout Troops 393, 7393
- Girl Scout Troop 2211
- Northland Homeschoolers
- Missouri Master Naturalists – Osage Trail and Loess Bluffs chapters

Number of individuals = 63 individuals
Volunteer Hours contributed = 587 hours

Donors and Supporters

Monetary contributions received January 1 to December 31, 2022:

Allstate Insurance Employee Match
Douglas & Leigh Bias
Rick & Sheryl Biermann
Bob Borman
Bernadette & Patrick Botbyl
Jim & Joyce Braddock
John & Linda Burwell
Ed Casey
ClubCorp, LLC
David & Carla Dods
Bruce Duffin
Edie & David Edwards
Michael & Kathleen Fascone
Claudia Ellermann & David Hermanns
Kathy Jenkins Hart
Shannon & Paul Holder
Lynn Horsley
Sharen Hunt
Tom & Sandy Jacobs
Lee Karbaumer
Elaine Kellerman
Mark Kover
Lee Kupfer
Carrie McCarthy
Tim & Nancy McDowell
Nebraska Floodplain & Stormwater Managers Assn
Mary Beth & Robert Ogle
David & Amy Perry
Bill Quitmeier
Olsson Associates
Joni Schwan
Shawnee Farm Account, LLC
Sydney Steele
Matt Strobbe
Trisha Tataryn



In-kind contributions of goods:

Jim Braddock
Carla Dods
Nancy and Tim McDowell
Sharen Hunt
Tom Jacobs

Partnerships

As an all-volunteer land trust, PLT relies on partners to conduct our land conservation and education programs. Through partnerships, we strive to collaborate for the benefit of the community and each organization. We are grateful for the following partners.

- Missouri Department of Conservation
- Missouri Master Naturalists
- Burroughs Audubon of Greater Kansas City
- Land Trust Alliance - Midwest
- The Conservation Fund
- Missouri Land Trust Coalition
- Deep Roots (formerly Kansas City Native Plant Initiative)
- The Resilient Activist

Board of Directors and Advisory Board

Two people left the Board of Directors in 2022 – Tim McDowell and Zachary Kramer. Three people joined the Board – Brennan Halbersma, Sydney Steele, and Joni Schwan. The Advisory Board remained at six people.

Board of Directors:

Jim Braddock, Treasurer
Christopher Cardwell
Carla Dods, President
Brennan Halbersma
Tom Jacobs, P.E., Vice President
Carrie McCarthy

Nancy McDowell, Secretary
David Perry
Joni Schwan
Sydney Steele
Matt Strobbe

Advisory Board members:

Sharen Hunt
Kathy Jenkins Hart
Mary Nemecek

Mark McKellar
Bill Quitmeier
Maria Theoharidis

<https://www.plattelandtrust.org>

<https://www.facebook.com/PlatteLandTrust/>

